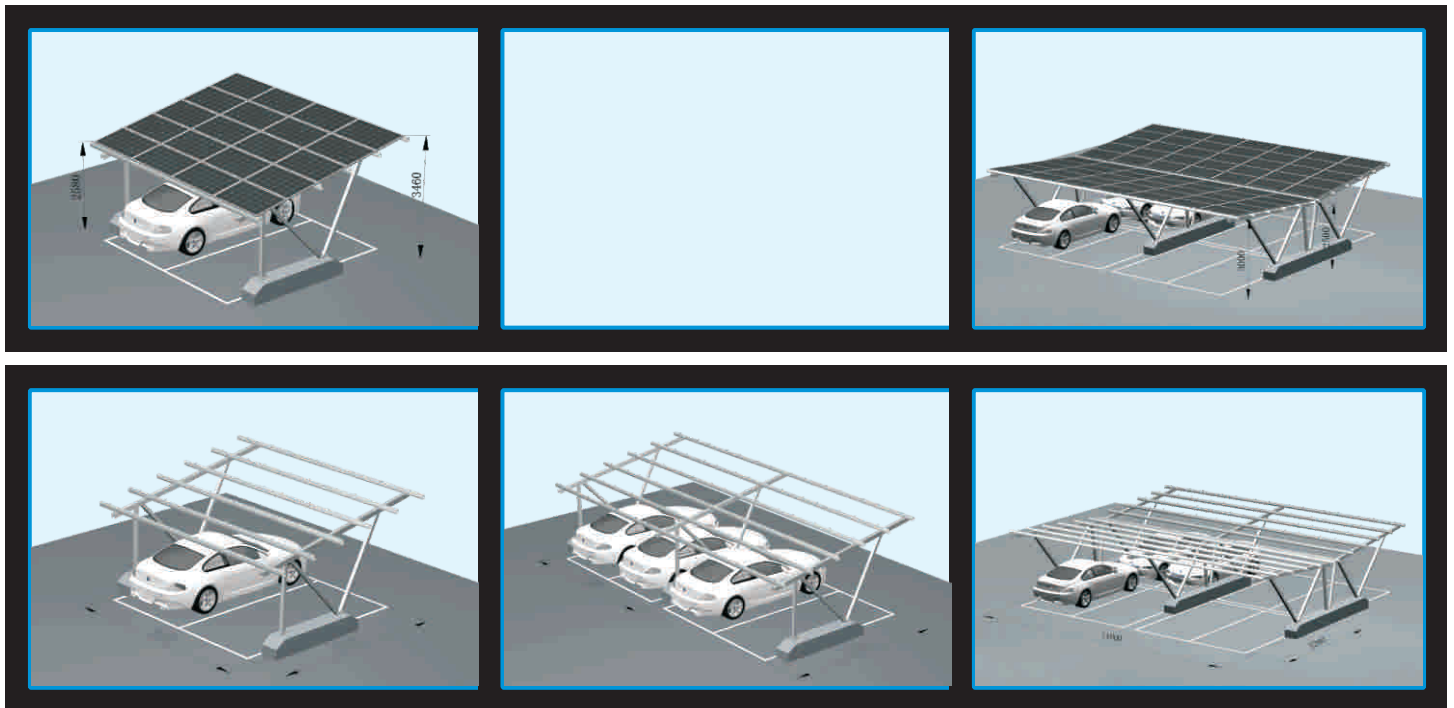


## Solar Carport Mounting System-concrete Foundation



2 cars:about 33m<sup>2</sup>

4 cars:about 57m<sup>2</sup>

8 cars:about 106m<sup>2</sup>

Technical Parameters		Benefits
Item	Illustration	Efficient use of space: enable the efficient use of land resource&space
installation site	the spacious place commercial park	
snow load	1.5KN/m <sup>2</sup>	Reduce the cost:according to the construction situation,pre-assemble the items before packing.Simplify the installation,to reduce the labour cost.
module orientation	portrait or landscape	
installation angle	0°~20°	Reliable mechanical validation:Huge pass the AS/NZS 1170.2-2011 and SGS test.The stable test is according to the general standard.
ground clearance	about 2.5m	
applicable module	frame and frameless	
Wind load	60m/s	The longest resistant duration:all the items use Al 6005-T5, the anodized surface treatment make highly anti-corrosion
color	nature	

## Solar Carport Mounting System-concrete Foundation

